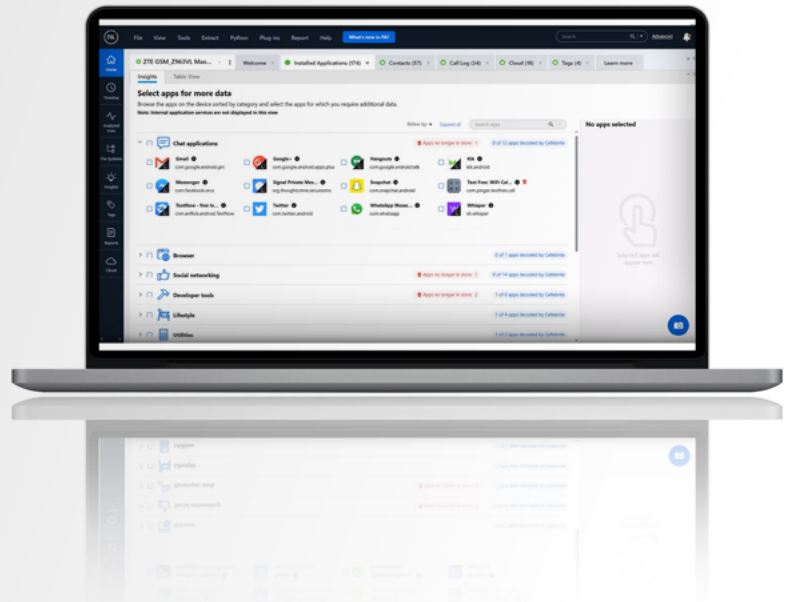




## PRODUCT OVERVIEW

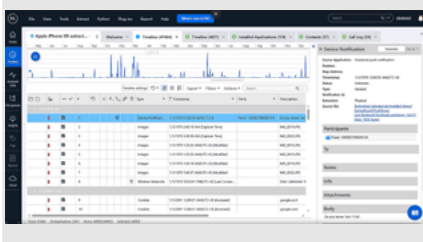


## From encrypted data to actionable intelligence

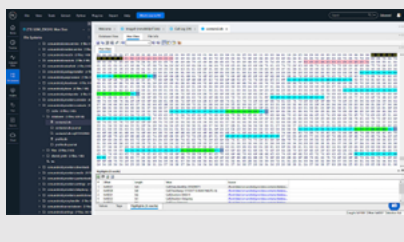
Cellebrite Physical Analyzer is the market leading solution for recovering and examining digital data from the broadest range of digital devices, applications, the cloud and warrant returns.

But that's not all, it provides you with an extensive set of tools and capabilities that allow you to dig deeper into the data and easily surface key evidence. From automatic decryption and decoding to application insights and data validation, Cellebrite Physical Analyzer is your go-to-tool for any investigation.

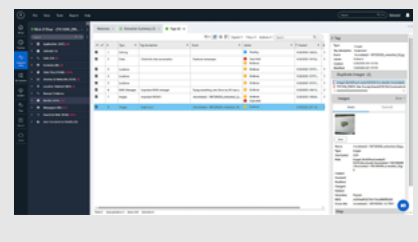
Good for examining  
digital evidence



Decode comprehensively  
and quickly



Built for agency-wide  
collaboration



## Key Capabilities

- **Access the widest range of applications, devices and file formats:** Ingest data extractions from Cellebrite UFED, Cellebrite Premium, Cloud Warrant returns and other extractions tools. Ongoing support for more than 11K applications and versions.
- **Surface actionable intelligence:** Application insights and the visual dashboard widgets help you focus your initial examination effort.
- **Visualize timeline of events:** An advanced graphical timeline allows you to build a storyline of events, and zoom in on a specific timeframe of interest.
- **Retrieve deleted data:** Carve unallocated space in a device's memory to recover deleted data and media files.
- **Dive deeper with advanced decoding:** Reassemble device and application data into readable formats with SQLite Wizard, Python scripting and Hex highlighting.
- **View application data in its native format:** Emulate any Android application using the Virtual Analyzer for a more intuitive view of the extracted data.
- **Review cloud data:** Capture private and public data from leading social media, cloud backup and cloud data sources using Cellebrite UFED Cloud.
- **Examine content in over 40 languages:** Get on-demand translation support with Cellebrite's Smart Translator. Perform fast analysis of non-native textual content, maintaining the source language alongside the translation.
- **Create easy-to-read reports:** Each team member can use Cellebrite Reader, a complementary tool, to navigate and tailor reports to their specific requirements.
- **Streamlined workflow:** Streamline data with UFED Cloud or into Cellebrite Pathfinder. Users can also export data into an eDiscovery solution.

Specifications	
PC	Windows compatible PC with Intel i5 or compatible CPU: 4 cores
Operating System	Microsoft Windows 8.x 64-bit and 10 64-bit
Memory (RAM)	Recommended: 32 GB Minimum: 16 GB
Storage	500 GB of free disk space for installation and highlights database Add-ons: 512 GB (offline maps and BSSID) SSD recommended

To learn more about **Cellebrite Physical Analyzer** visit: [cellebrite.com](https://cellebrite.com)

